



night on
the town
gallons of style



Wall Colour: P5221-41 / film festival



sultry

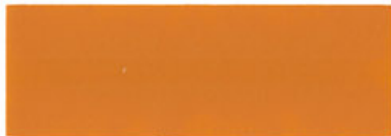
Entertain every idea. Run your finger down the palette and imagine each colour as a wall, a floor, a fabric, a texture. These colours are designed to dance together — deep with delicate, hot with cool... like the tango in a tuxedo. The result is an effortless mix and match that delights, soothes, and stirs the senses all at once.



P5221-41
film festival



P5064-14*
steamy summer air



P5068-73*
dancing flames



P5244-85
midnight hour

Actual paint colour may vary from sample, depending upon lighting, surface porosity, sheen level, application and age.

Actual paint colour may vary from sample, depending upon lighting, surface porosity, sheen level, application and age.



P5247-85
spiked heels



P5215-72
i'm pampered



P5088-83
centre stage



P5003-75
night sets in



P5013-85
marathon



sumptuous

Whet your appetite. Bring in the excitement of the night, the glow of the city, and dress your room for dinner. Accent an alcove or wall, or go head-to-toe in colours as deliciously rich as figs and walnuts, as romantic as a stolen glance. Accessorize with sparkle and these new classics say luxury the minute you put them on.



Wall Colour: P5247-85 / spiked heels



Wall Colour: P5205-14* / nightcap



softly sleek

Exhale. Create a space of perfect, sensuous calm after a fast-paced day, with colours reminiscent of fresh, crisp sheets or the touch of cool silk against skin. Magical, misty colours that warm to dark woods and shimmer softly in candlelight. Four parts peace, one part passion, this is your very own boutique hotel.



P5204-85
walkin' in the rain



P5079-73*
kiss goodnight



P5205-14*
nightcap



P5205-52
sublime

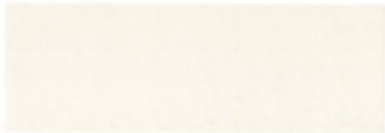
Actual paint colour may vary from sample, depending upon lighting, surface porosity, sheen level, application and age.



P5220-83
a new chic dress



P5082-85*
schmooze



P5224-24
orchid



P5116-73
natural beauty



P5240-73
carrriage ride



sophisticated

Make an entrance. As drop-dead gorgeous as the perfect cocktail dress, this velvety palette is instantly alluring. The message is quietly bold, and the feeling is unmistakably confident. Like the strut of couture, these are rich, self-assured colours that let you put together a look that's all drama and grown-up glam.



Wall Colour: P5082-85* / schmooze