

HISTORICAL

True Colours

FOR WESTERN CANADA



HISTORICAL TRUE COLOURS



VC-1
Oxford Ivory



VC-2
Craftsman Cream



VC-3
Pendrell Cream



VC-4
Harris Cream



VC-5
Dunbar Buff



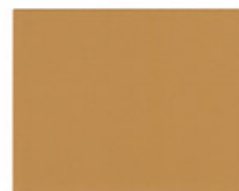
VC-6
Edwardian Buff



VC-7
Edwardian Cream



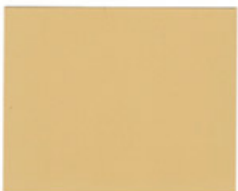
VC-8
Mount Pleasant Buff



VC-9
Strathcona Gold



VC-10
Comox Gold



VC-11
Kitsjlanq Gold



VC-12
Mount Pleasant Tan



VC-13
Bute Taupe



VC-14
Dunbar Grey



VC-15
Haddington Grey



VC-16
Comox Sage



VC-17
Victorian Peridot



VC-18
Pendrell Green



VC-19
Comox Green*



VC-20
Vancouver Green*



VC-21
Harris Green



VC-22
Pendrell Verdigris



VC-23
Edwardian Pewter



VC-24
Point Grey



VC-25
Harris Grey*



VC-26
Edwardian Porch Grey



VC-27
Strathcona Red



VC-28
Mellish Rust*



VC-29
Pendrell Red*



VC-30
Hastings Red*



VC-31
Mellish Mahogany*



VC-32
Craftsman Brown*



VC-33
Harris Brown*



VC-34
Strathcona Mahogany*



VC-35
Gloss Black**

* These colours are shown in Benjamin Moore Collection® Soft Gloss finish, due to the extreme depth in colour. When tinted in Benjamin Moore Collection® Low Lustre, a slight variation may be observed.
** Black is available in low lustre or soft gloss finishes. For true authenticity, the Vancouver Heritage Foundation recommends the Benjamin Moore Collection® Impervex High Gloss product.

HISTORICAL TRUE COLOURS



Victorian



VC-6
Edwardian Buff



VC-27
Strathcona Red



VC-26
Edwardian Porch Grey



VC-16
Comox Sage



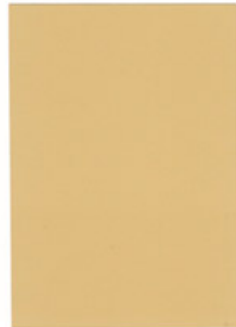
VC-27
Strathcona Red



VC-18
Pendrell Green



Queen Anne



VC-11
Kitsilano Gold



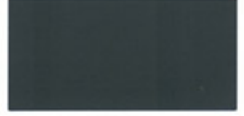
VC-20
Vancouver Green*



VC-32
Craftsman Brown*



VC-22
Pendrell Verdigris



VC-18
Pendrell Green



VC-30
Hastings Red*



Edwardian



VC-30
Hastings Red*



VC-6
Edwardian Buff



VC-35
Gloss Black**



VC-9
Strathcona Gold



VC-27
Strathcona Red



VC-34
Strathcona Mahogany*

HISTORICAL TRUE COLOURS



Craftsman



VC-31
Mellish Mahogany*



VC-7
Edwardian Cream



VC-20
Vancouver Green*



VC-11
Kitsilano Gold



VC-28
Mellish Rust*



VC-35
Gloss Black**



Craftsman



VC-20
Vancouver Green*



VC-7
Edwardian Cream



VC-14
Dunbar Grey



VC-5
Dunbar Buff



VC-35
Gloss Black**



VC-30
Hastings Red*



Tudor Revival



VC-34
Strathcona Mahogany*



VC-5
Dunbar Buff



VC-32
Craftsman Brown*



VC-1
Oxford Ivory



VC-6
Edwardian Buff



VC-34
Strathcona Mahogany*